



Vessel name	Built	IMO no.	Flag	Vessel name	Built	IMO no.	Flag
CHIPOL GUANGAN	2011	9425186	MONROVIA	CHIPOL XIONGAN	2012	9425198	MONROVIA

MAIN DATA

Vessel type	Multipurpose Heavylifter
Classification	GL +100A5, MULTI-PURPOSE DRY CARGO SHIP, E1, STRENGTHENED FOR HEAVY CARGOES, G, EQUIPPED FOR CARRIAGE OF CONTAINERS, IWS, +MC, E1, AUT-Z SOLAS II-2 REG.19
GT/NT	20,973 / 10,262
Deadweight (summer)	28,259 mt
Max. draft (summer)	10.00 m
Length o.a.	166.50 m
Length between pp.	158.32 m
Breadth moulded	27.40 m
Height above keel	47.50 m
Max. Speed	14.0 knots

Fuel consumption 24.5 mt RMG 380 fuel per day at sea
 3.0 mt MGO DMA per day in port without gear
 6.0 mt MGO DMA per day in port with gear

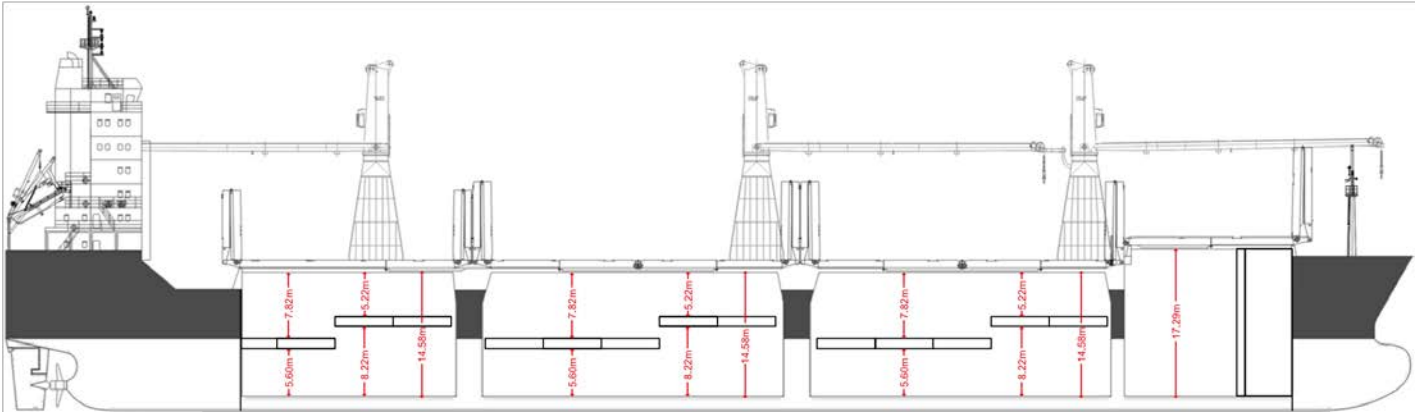
HOLDS/HATCHES/CRANES

Cargo hold capacity	39,102 cbm / 1.380,871 cbft
Floor space under deck	4,694 sqm / 50,525 sqft
Floor space on deck	2,628 sqm / 28,287 sqft
Cranes	3 NMF cranes situated portside 2 x 120 mt + 1 x 80 mt capacity each 240 mt capacity combined
Container intake	963 TEU nominal 963 on deck 736 under deck 100 reefer plugs
Deck strengths per sqm	20.00 mt on tanktop 3.20 mt on tweendeck 3.00 mt on hatchcovers

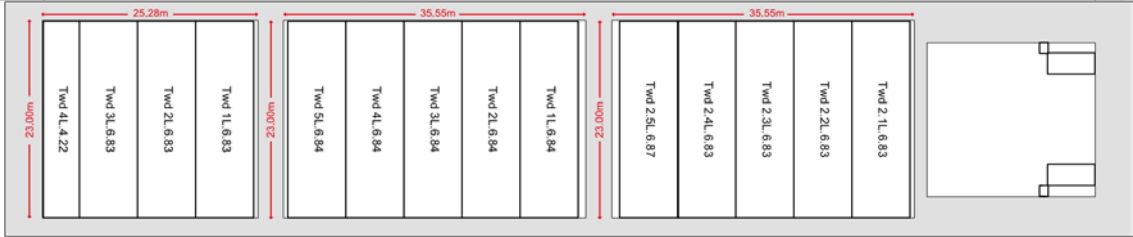
SPECIAL EQUIPMENT/FEATURES.

Fitted for trading Australia.[Ⓜ]
 Fitted for carriage of dangerous goods of all IMO classes.[Ⓜ]

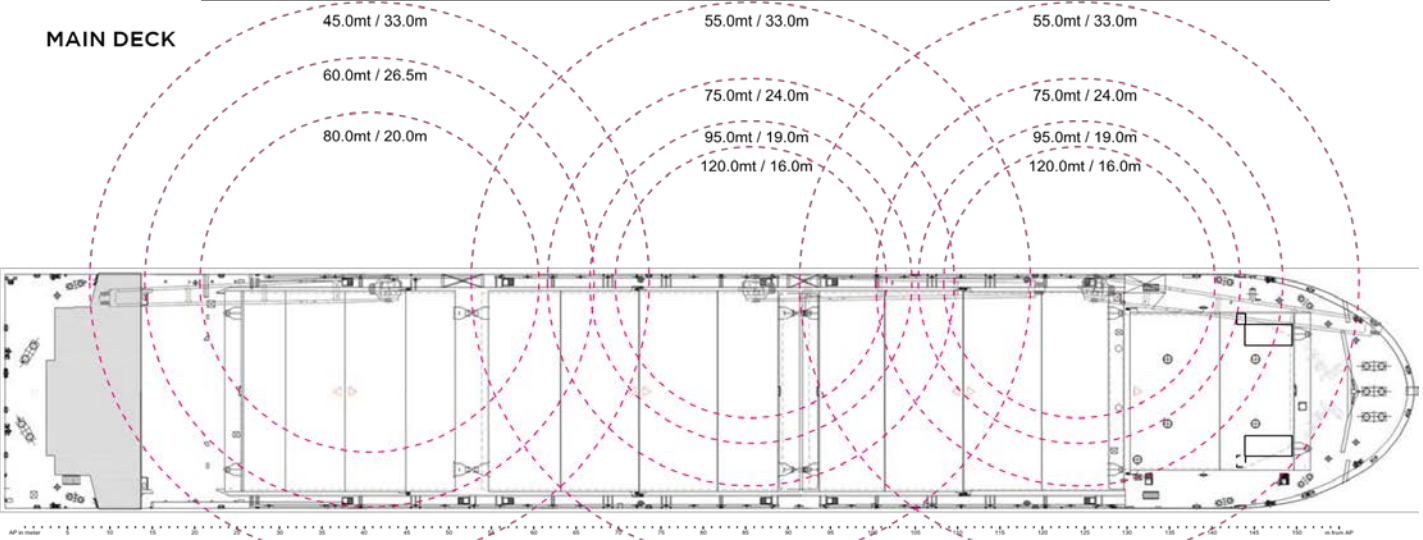
SIDE VIEW



TWEEDECK



MAIN DECK



TANKTOP

